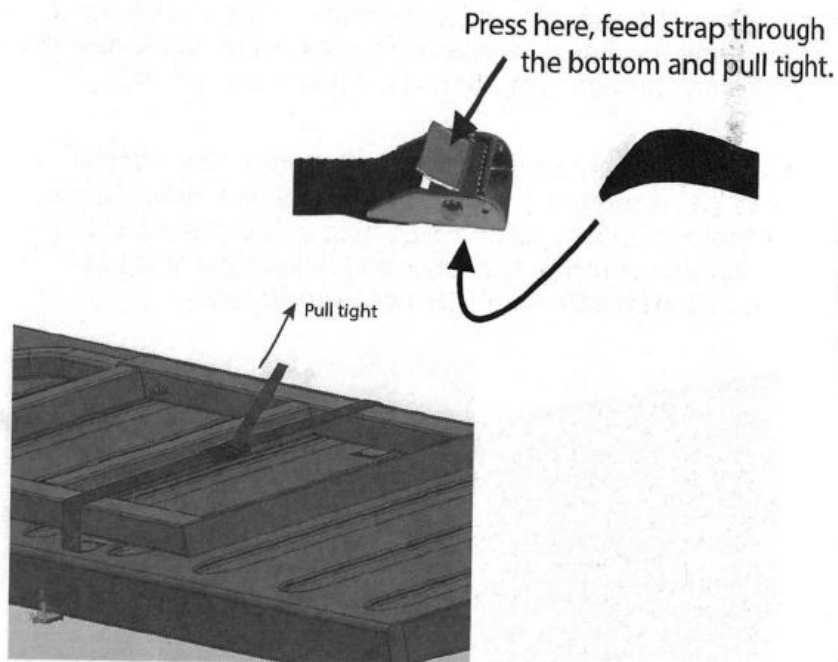


6 Strap Down

To secure the Tailgate Ladder feed the strap through the buckle and pull tight to the tailgate.



You're Done!

And now your truck is much more accessible.

See more great products at www.traxionproducts.com

Search traxion products on  and .



The Tailgate Ladder

For online video instructions on how to install The Tailgate Ladder visit the product page at:

www.traxionproducts.com/5-100

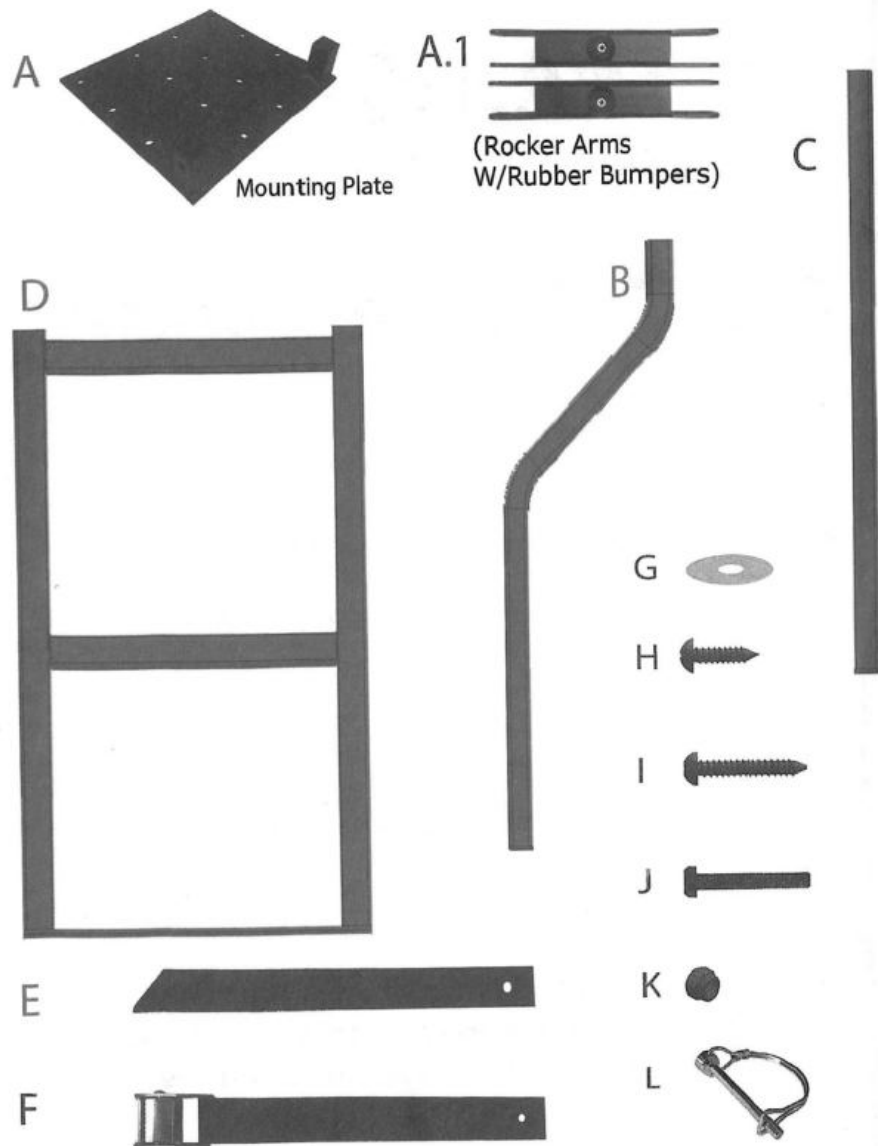
Or search for "tailgate ladder instructions" at www.youtube.com

**Thank you for purchasing this Tailgate Ladder.
If you have any questions or comments please
visit our website at www.traxionproducts.com
or phone 479-474-3460.**

This is a Patented Product
7401798

Instructions 5-100v11 20201220

Tailgate Ladder Parts

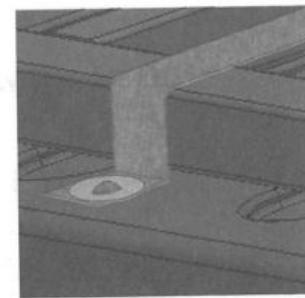
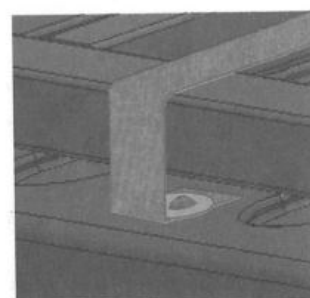
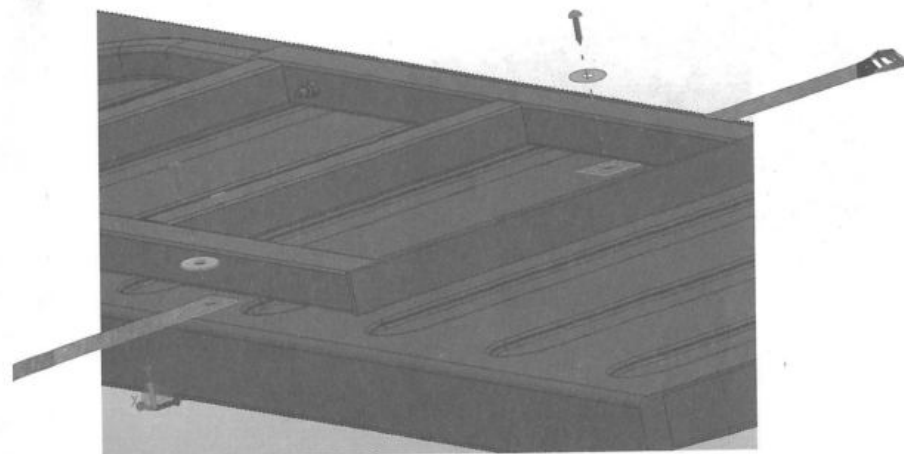


5 Attach Tie Down Strap

Lay assembled ladder across tailgate. Locate best placement of the male and female straps between bottom flat steel and first step of the stored ladder.

Straps may be secured underneath the stowed ladder or to the outside as shown in smaller images below. Mark desired screw spot through strap hole. Drill pilot hole with #5 (9/64") bit.

Secure the straps to the tailgate with 20mm Sheet Metal Screws (H) if there is no liner or 45mm Sheet Metal Screws (I) if there is a liner. Align drilled hole in tailgate with strap hole. Put screw through washer and hole in the strap as shown. Tighten until snug. Do not overtighten.



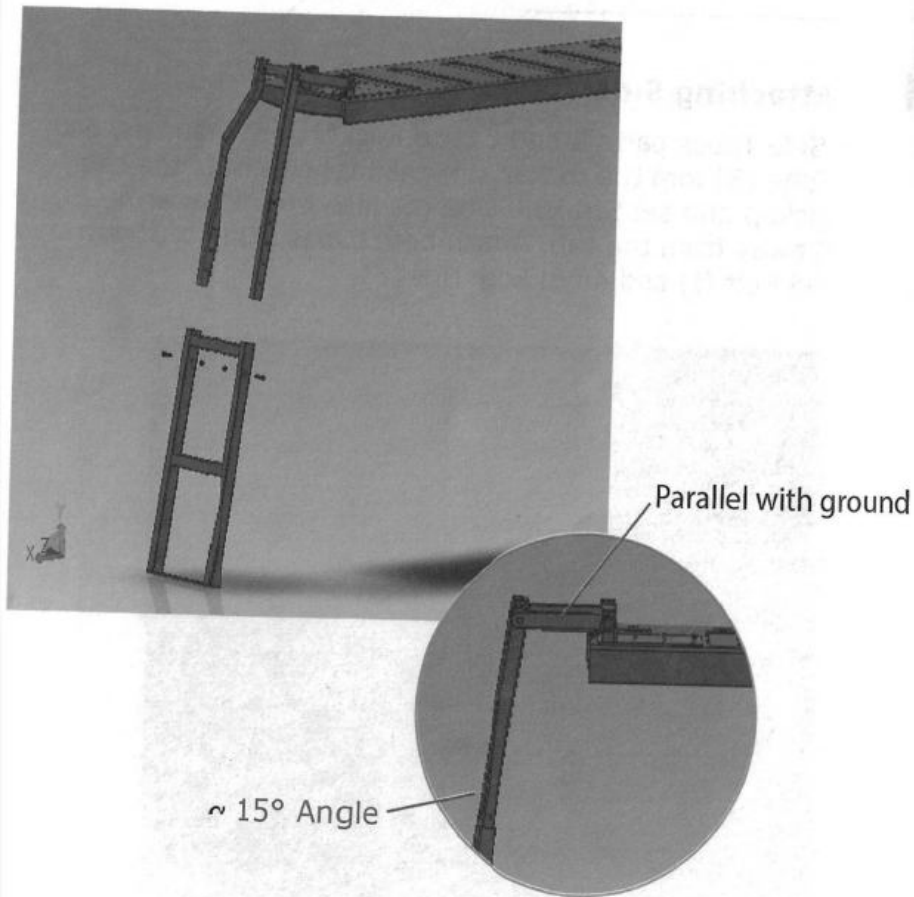
Secure straps in either direction as needed with your specific tailgate.

4

Attach Climbing Section

Move Rocker Arms and Tubes to the "in use" position (tubes pointed towards ground). Attach Climbing Section with Safety Label right side up and facing away from Truck by sliding the two tubes into the tubing of the Climbing Section.

Adjust until ladder is approximately 15 degrees to vertical and the rocker linkage is approximately parallel to the ground as shown below. Locate the holes underneath the top rung and secure the length on each side rail with 4 x 35mm Hex-Head Bolts (J).



Tools Required:

Drill

#5 (9/64") Drill Bit

#2 Phillips Head Screw Driver

Marking Pen / Center Punch

3/8" or 10mm wrench (with second wrench or Crescent)

Tailgate Ladder Parts List:

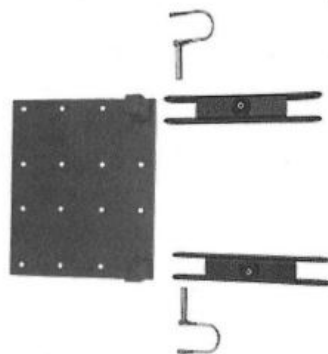
- A. (qty 1) Mounting Plate
- A.1. (qty 2) Rocker Arms with rubber bumpers
- B. (qty 1) Offset Tube
- C. (qty 1) Straight Tube
- D. (qty 1) Climbing Section
- E. (qty 1) Tie Down Strap with Male Clasp
- F. (qty 1) Tie Down Strap with Female Clasp
- G. (qty 2) 6mm Fender Washers
- H. (qty 9) 3.5mm x 20mm Sheet Metal Screws
- I. (qty 9) 3.5mm x 45mm Sheet Metal Screws
- J. (qty 4) 4mm x 35mm Hex-head Bolts
- K. (qty 4) 4mm Lock Nut
- L. (qty 2) Lock Pin

Assembly Instructions

Have truck on level surface when installing the Tailgate Ladder.

1 Attach Rocker Arms to Mounting Plate

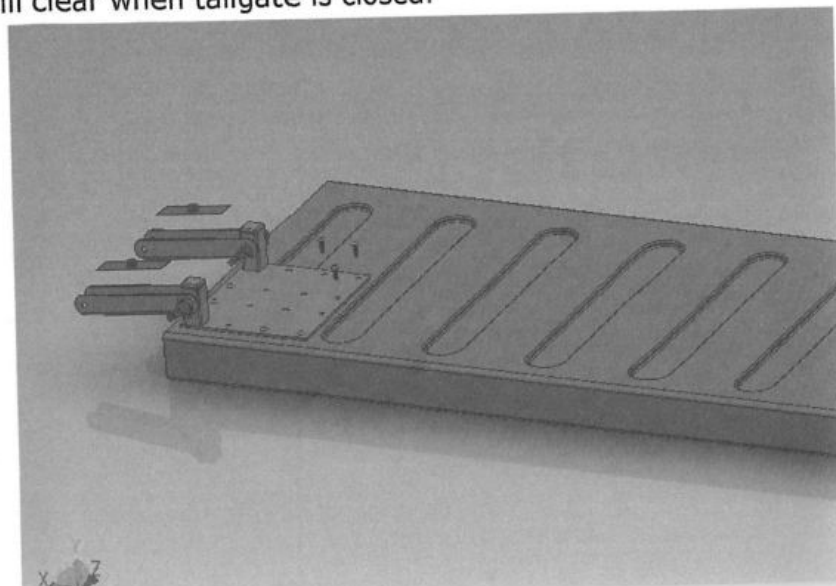
Place Rocker Arms (A) on the Mounting Plate (A.1) using the quick release pins (L). The rocker arms should be attached so the rubber bumper is face up. When folded back to the tailgate it allows for a tighter fit and reduces rattle when in use.



2 Attach Mounting Plate

Position mounting plate with Rocker Arms on preferred side of the tailgate, with the studs with rocker arm channels toward the side edge of the tailgate. The Rocker Arm closest to the cab of the truck will rest on support cable until you get the whole ladder assembled.

Mount at least 1" from the top of the tailgate and at least 1/2" from the side edge, depending on truck model, so the ladder will clear when tailgate is closed.



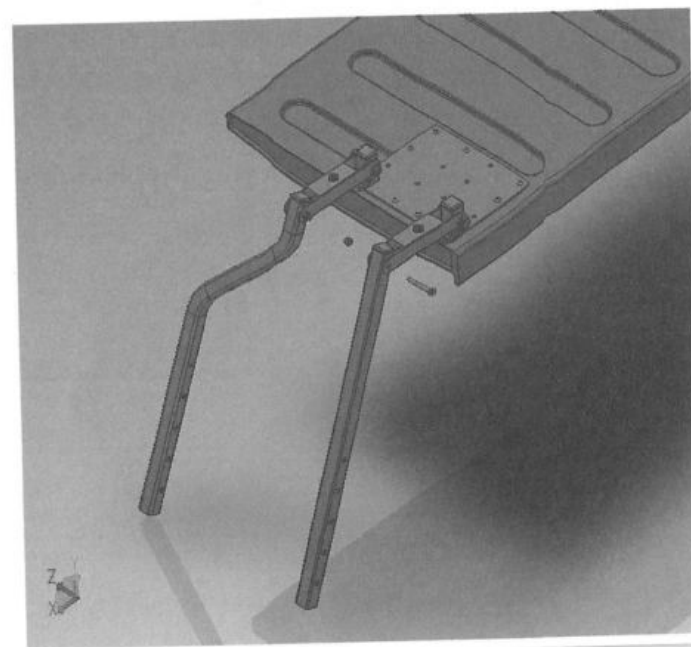
NOTE: Only half of the holes in the mounting plate will be used. Based on model of truck/tailgate the screw hole locations will vary. Optimum screw locations are the front and back sides of mounting plate - instead of the interior holes.

Drill six holes in optimal locations using #5 (9/64") Drill Bit.

Use 6 of the 20mm Sheet Metal Screws (H) for tailgates without liner or with sprayed on liners. Use 6 of the 45mm Sheet Metal Screws (I) for tailgates with drop-in bed liners. Screw Mounting Plate to tailgate.

3 Attaching Side Tubes

Attach Side Tubes parts B and C onto Rocker Arm channels. Set Offset Tube (B) into the rocker arm channel closest to the cab of the pickup and set Straight Tube (C) into the rocker arm channel away from the cab. Attach both tubes with 4 x 35mm Hex-head Bolt (I) and 4mm Lock Nut (K).



PRO GEAR RACE SEAT

PART NUMBER 2-700

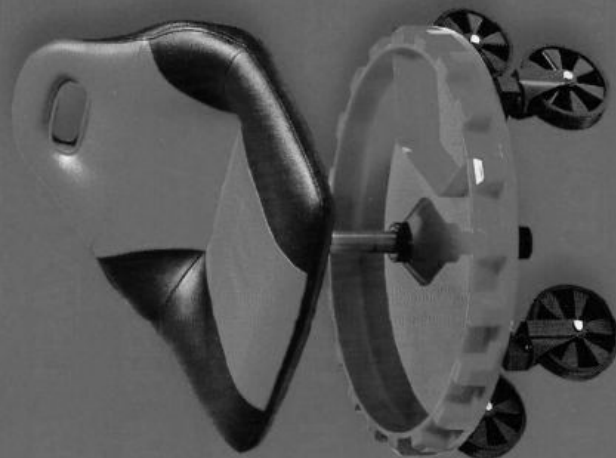
CARRY HANDLE BUILT RIGHT IN THE SEAT
ENABLES ONE-HANDED CARRYING.

THE LARGE GEAR TRAY SPINS SO YOU CAN
EASILY ACCESS YOUR TOOLS AND PARTS.

HUGE FIVE 5" CASTERS FOR A BEST IN CLASS
MOBILITY.

ADJUSTABLE HEIGHT TO A VERY LOW PROFILE
MADE POSSIBLE BECAUSE OF THE DROP
SLEEVE

SEAT HEIGHT ADJUSTS FROM 13 1/2" TO 17 1/2"



ABOUT US

"WE ARE PROUD TO DESIGN AND
MANUFACTURE OUTSTANDING TOOLS, TRUCK
ACCESSORIES AND OUTDOOR GEAR. WHY THIS
STUFF? BECAUSE THIS IS THE STUFF WE USE.
WE ARE CRITICAL AND CURIOUS AND BECAUSE
OF THAT THE RESULT IS BETTER PRODUCT
PERFORMANCE.

517 S 28TH ST, VAN BUREN, AR 72956
(479) 474-3460

TRAXION
engineered products

FIND MORE PRODUCTS
ON OUR WEBSITE

TRAXIONPRODUCTS.COM



TRAXION

engineered products

THANK YOU FOR CHOOSING TRAXION ENGINEERED PRODUCTS!
WELCOME TO THE FAMILY.

TOPSIDE[®] CREEPER NXT

patent pending

GENERATION 3

PART NUMBER 3-200

ERGONOMIC DESIGN MAKES YOU MORE PRODUCT FOR LONGER DURATION.

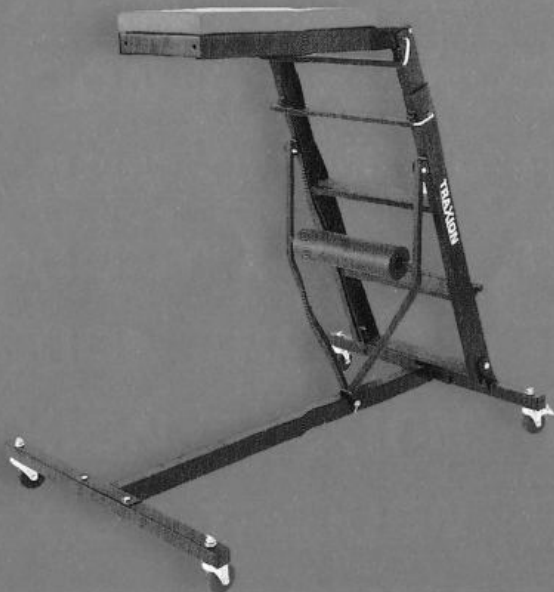
ROLLS INTO THE RIGHT PLACE WITH MULTIPLE ADJUSTMENT POINTS.

LOCKING CASTERS FOR SECURITY AND LEVERAGE.

PADDED DECK IS COMFORTABLE AND EASY TO CLEAN.

THE TOPSIDE CREEPER FOLDS UP FOR EASY AND COMPACT STORAGE.

HEIGHT ADJUSTS FROM A LOW 28 1/2" TO 44"



WIDE BODY CREEPER

PART NUMBER 1-100

WIDEBODY DECK WITH LUMBAR SUPPORT PROVIDES EXCEPTIONAL COMFORT AND PRODUCTIVITY.

5" TERRAIN CASTERS PROVIDE EXCELLENT MOBILITY, ROLL RIGHT OVER MOST SHOP DEBRIS AND EVEN CORDS.

THE WIDEBODY OUTRIGGER FRAME GETS DECK LOW DESPITE HUGE CASTERS.

CONVENIENT WIDEBODY HANGER WORKS ON PEG OR TOOLBOX LIP.

DESIGNED AND BUILT FOR THE PROFESSIONAL WITH EXCELLENT FUNCTION AND DURABILITY.



TAILGATE LADDER

PART NUMBER 5-100

GROUND SUPPORTED FOR GREATER STRENGTH AND STABILITY.

CAN BE MOUNTED ON EITHER SIDE OF THE TAILGATE.

CAN BE USED EVEN WITH TRAILER ATTACHED TO THE TRUCK.

QUICK AND EASY TO DEPLOY.

QUICK RELEASE PINS ALLOW EASY REMOVAL FROM THE TAILGATE.

REDUCES STRAIN ON YOU AS YOU GET IN AND OUT OF THE BED OF YOUR TRUCK.

