

# **VEVOR<sup>®</sup>**

**TOUGH TOOLS, HALF PRICE**

Technical Support and E-Warranty Certificate [www.vevor.com/s1](http://www.vevor.com/s1)

## **Truck Bed Storage Tool Box For Dodge Ram 1500 2019-2020 USER MANUAL**

# **VEVOR<sup>®</sup>**

**TOUGH TOOLS, HALF PRICE**

Technical Support and E-Warranty  
Certificate [www.vevor.com/support](http://www.vevor.com/support)

We continue to be committed to provide you tools with competitive price. "Save Half", "Half Price" or any other similar expressions used by us only represents an estimate of savings you might benefit from buying certain tools with us compared to the major top brands and does not necessarily mean we cover all categories of tools offered by us. You are kindly reminded to be careful when you are placing an order with us if you are actually saving money by comparison with the top major brands.

## PRODUCT SPECIFICATION

Model Number	Used for	Driver Side(L)	Passenger Side(R)	G.W.	Packing Size	Volume limit	Load limit	With Padlock
ZP20220406B01	Chevrolet Silverado 1500 GMC Sierra 1500 2019-2020 L	✓		8.6kg	925×280×425 (mm)	25L	75lbs	✗
ZP20220406B02	Chevrolet Silverado 1500 GMC Sierra 1500 2019-2020 R		✓	8.6kg				✗
ZP20220406C01	Dodge Ram 1500 2019-2021 L	✓		9.0kg				✓
ZP20220406C02	Dodge Ram 1500 2019-2021 R		✓	9.0kg				✓
ZP20220406S01	2015-2021 Ford F150 L	✓		9.0kg				✓
ZP20220406S02	2015-2021 Ford F150 R		✓	9.0kg				✓
ZP20220406E01	Tundra 2007-2021 L	✓		9.0kg				✓
ZP20220406E02	Tundra 2007-2021 R		✓	9.0kg				✓
ZP20220406F01	Super Duty 2017-2021 L	✓		9.0kg				✓
ZP20220406F02	Super Duty 2017-2021 R		✓	9.0kg				✓



### WARNING:

Do not sit on the case to avoid any damage on case or hurt user.

# VEVOR®

## Truck Bed Storage Tool Box

### INSTALLATION INSTRUCTION

ZP20220406C01

ZP20220406C02



NOTE: Actual product may vary due to product enhancement. The specifications of each item are listed on the last page.

## NEED HELP? CONTACT US!

Have product questions? Need technical support? Please feel free to contact us:

Technical Support and E-Warranty Certificate  
[www.vevor.com/support](http://www.vevor.com/support)

This is the original instruction, please read all manual instructions carefully before operating. VEVOR reserves clear interpretation of our user manual. The appearance of the product shall be subject to the product you received. Please forgive us that we won't inform you again if there is any technology or software updates on our product.

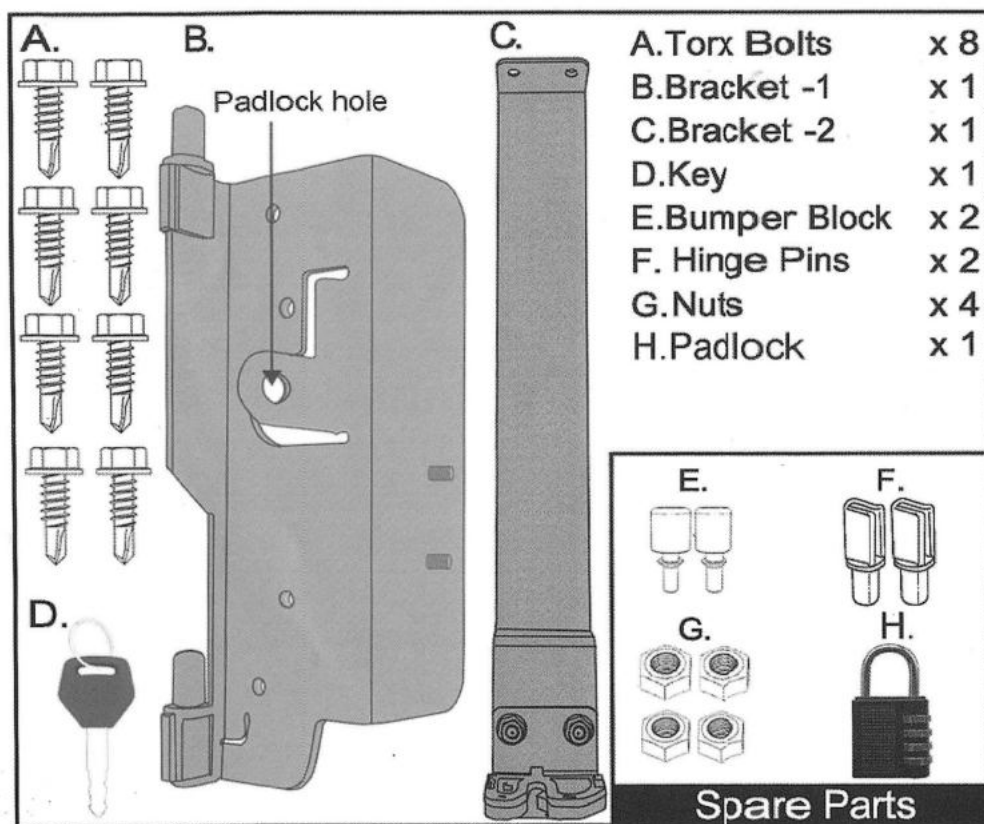
## INSTALLATION PRECAUTIONS

The storage tool box doesn't fit Stepside Truck Bed, and it only fits Fleetside Truck Bed. If your truck is equipped with bed liner or rugs, we do not suggest to install the Bracket-1 and Bracket-2 directly on the surface of the bed liner or rugs. You may need to properly trim the bed liner or rugs and attach the brackets onto the metal sheet of your truck bed. Please take essential safety precaution during the installation procedure. If you do not have enough installation skills, it is recommended to seek the help from a qualified mechanic. We recommend maximum weight capacity 75lbs.

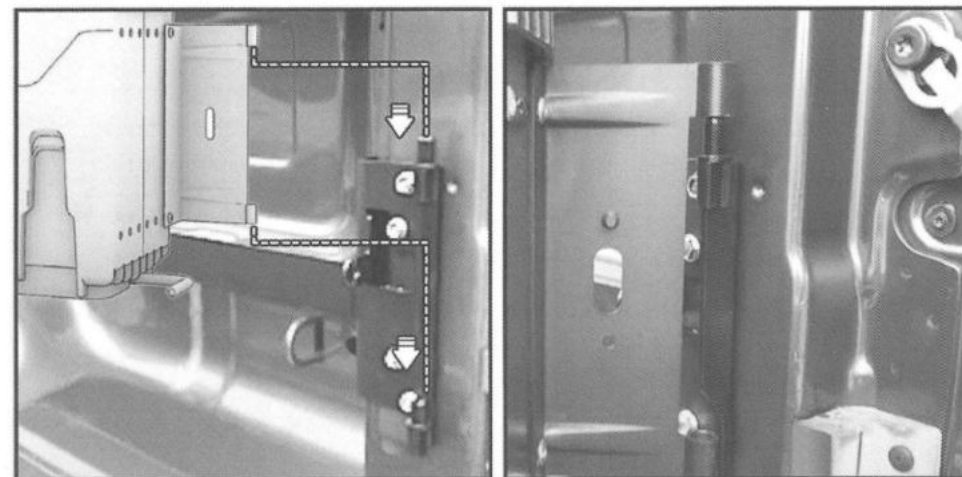
## HARDWARE INCLUDED

Driver Side (L)

Model: ZP20220406C01

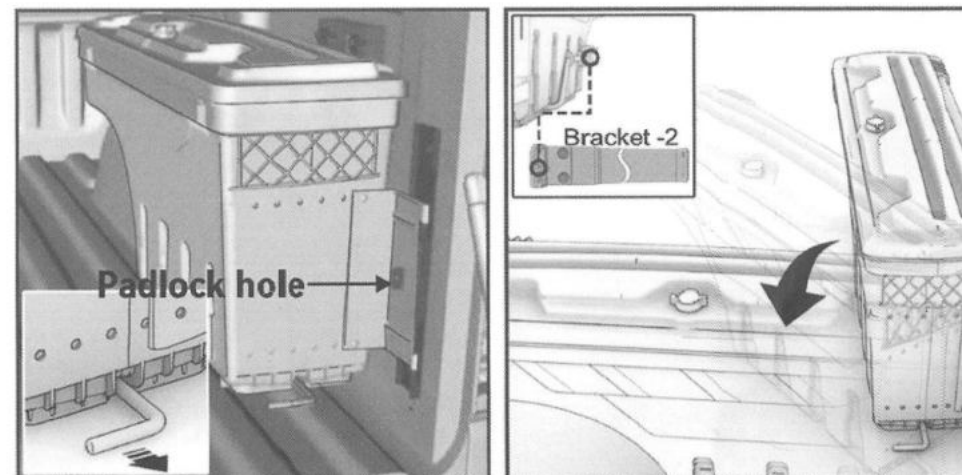


## 3. Install the Storage Tool Box



- Clasp the storage tool box onto the two Hinge Pins of Bracket-2;
- Push the storage tool box to the stowed position.

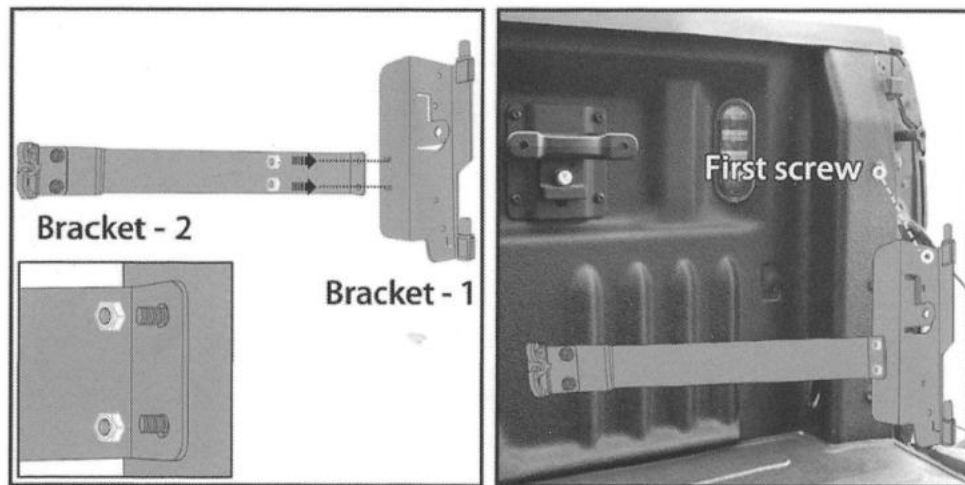
## 4. Test and Adjustment



- Pull the yellow latch to make sure the storage box rotates flexibly and latches smoothly;
- Please make some small adjustment if it won't latch freely, just loosen the two bolts on the latch;
- Installation completed;
- Lock the padlock into the hole if needed.

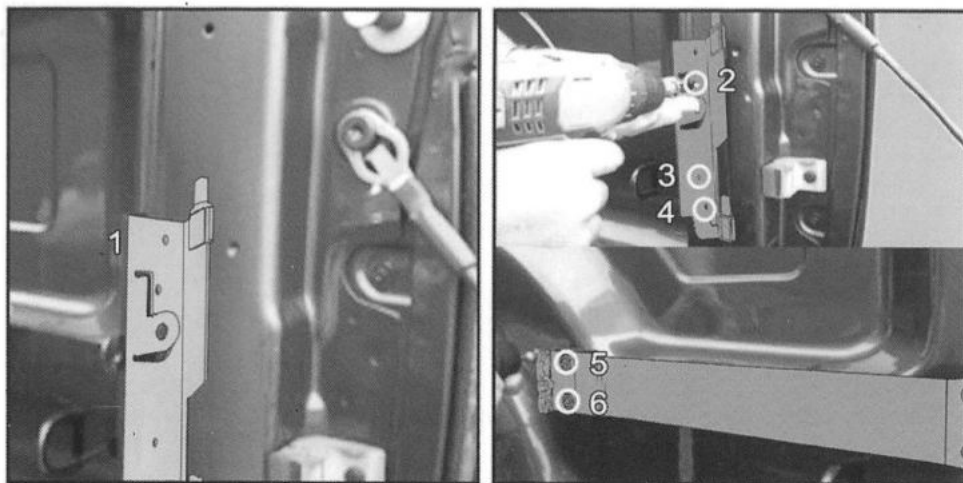
## INSTALLATION GUIDE- FOR PASSENGER SIDE(R)

### 1. Assemble Bracket-1 with Bracket-2



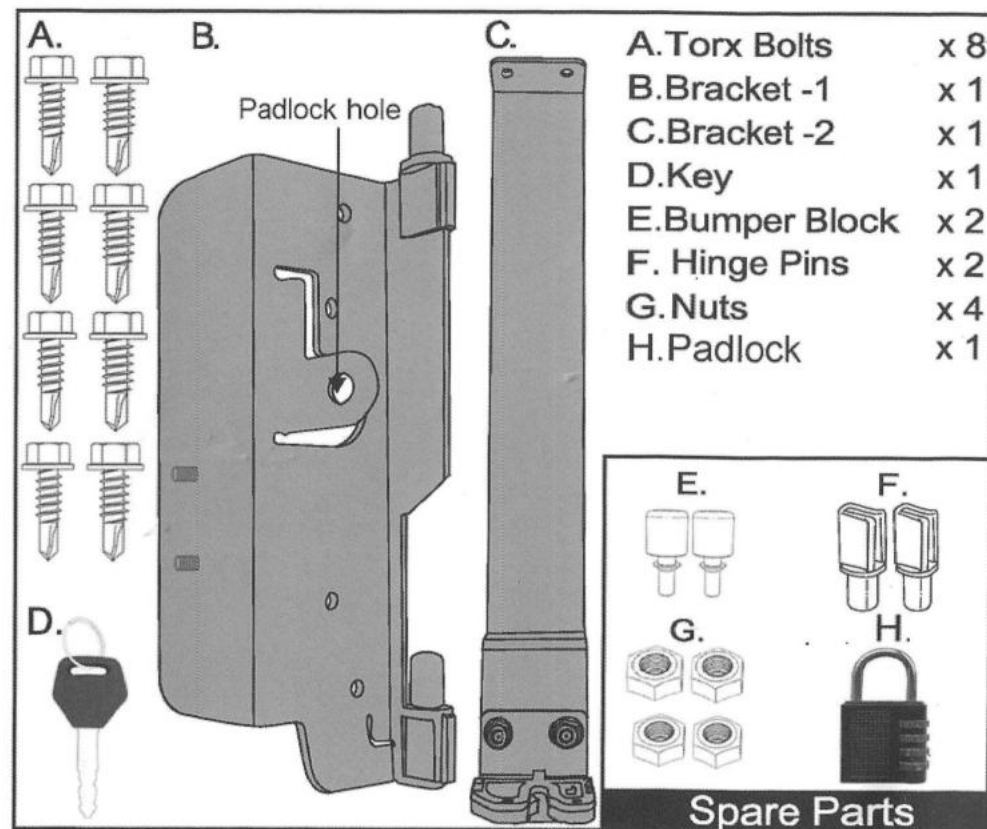
- Tighten two brackets with 2 Nuts;
- Align the Bracket-1 to the first screw as circled above.

### 2. Install the Brackets to Truck Bed



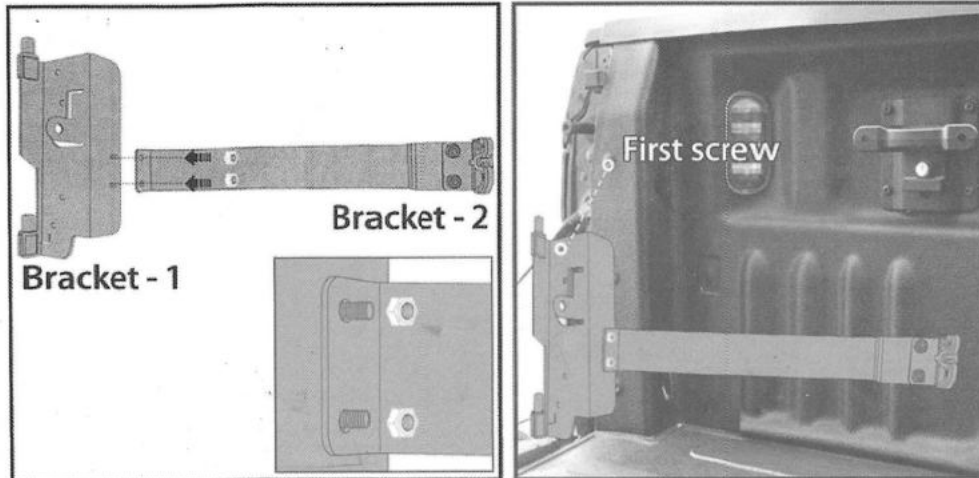
- Fasten 1 Torx Bolt to the first screw on Bracket-2 first;
- Tighten the brackets with 5 Torx Bolts from 2 to 6.

Passenger Side (R)  
Model: ZP20220406C02



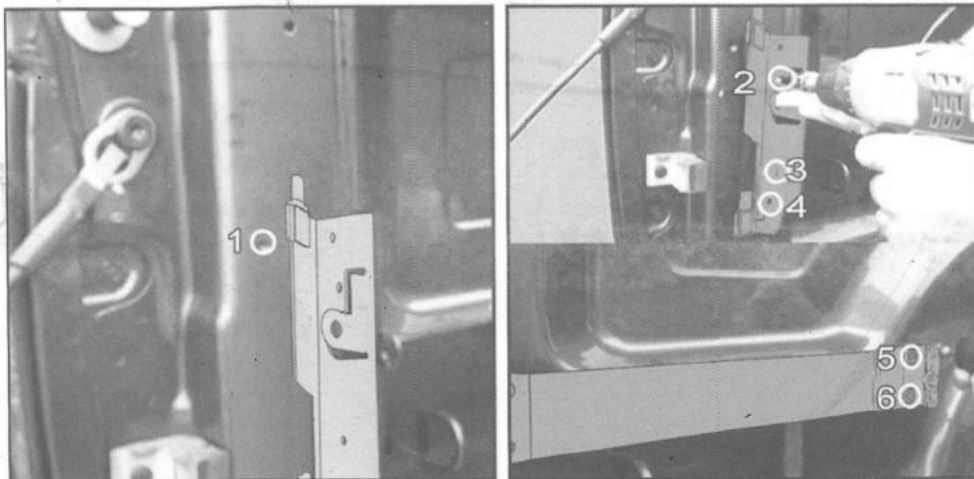
## INSTALLATION GUIDE- FOR DRIVER SIDE (L)

### 1. Assemble Bracket-1 with Bracket-2



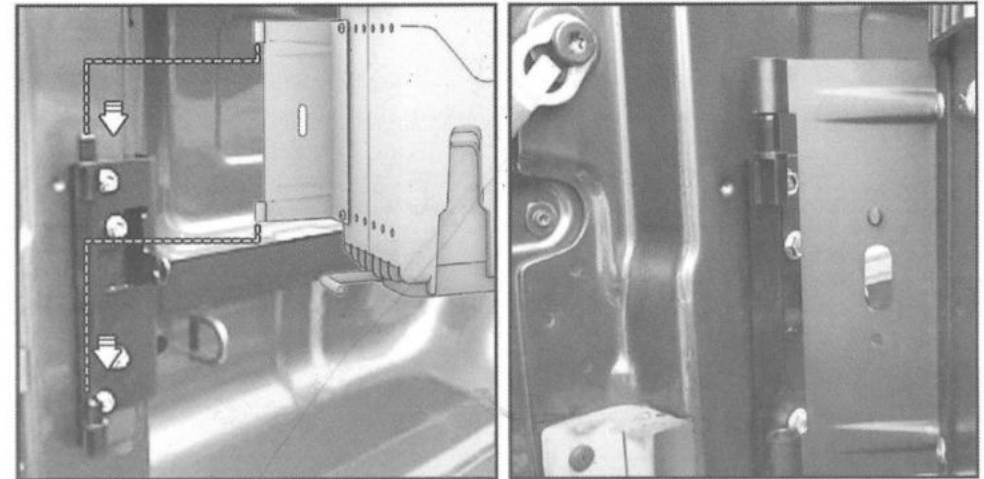
- Tighten two brackets with 2 Nuts;
- Align the Bracket-1 to the first screw as circled above.

### 2. Install the Brackets to Truck Bed



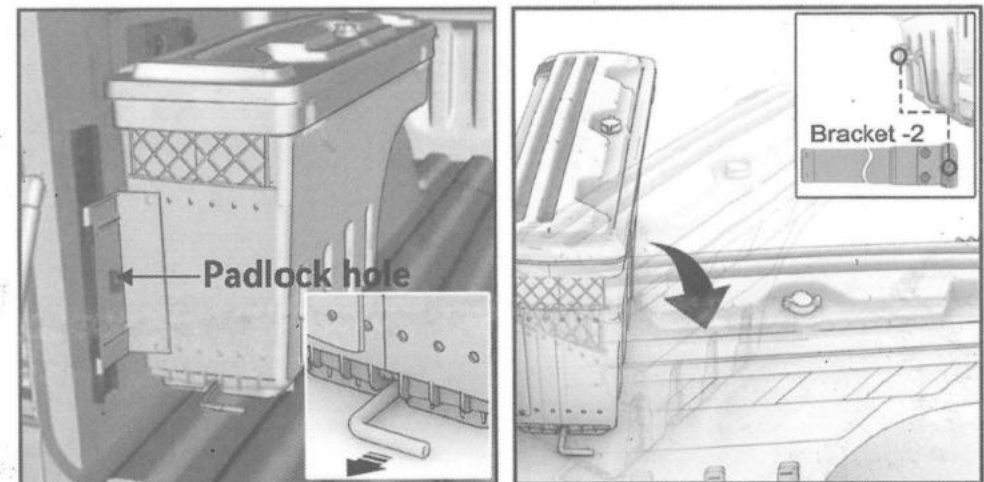
- Fasten 1 Torx Bolt to the first screw on Bracket-2 first;
- Tighten the brackets with 5 Torx Bolts from 2 to 6.

### 3. Install the Storage Tool Box



- Clasp the storage tool box onto the two Hinge Pins of Bracket-2;
- Push the storage tool box to the stowed position.

### 4. Test and Adjustment



- Pull the yellow latch to make sure the storage box rotates flexibly and latches smoothly;
- Please make some small adjustment if it won't latch freely, just loosen the two bolts on the latch;
- Installation completed;
- Lock the padlock into the hole if needed.